



100% AMERICAN MADE

CORTECH[®]

USA

Fed ID #: 36-3932100

"Solutions for the Correctional Environment"^{™SM}

**KANGAROO
CART[™]**



RAZORBACK[™]
The Correctional Specific **CHAIR**



EZBUNK[™]
EZ To Clean • EZ To Stack • EZ To Store • EZ To Use



**The
COBRA CAN[™]**



SABRE
Sectional Lounge Chair System



**BARRACUDA
BOX[™]**



**THE
Chuckwagon[®]**



**THE
TRAY
MASTER[®]**
PATENT PENDING



**X[®]
TRAY**



THE ROCK[®]

BUDGET PRICES / EXTREME PERFORMANCE / BUY AMERICAN!

www.cortechusa.com

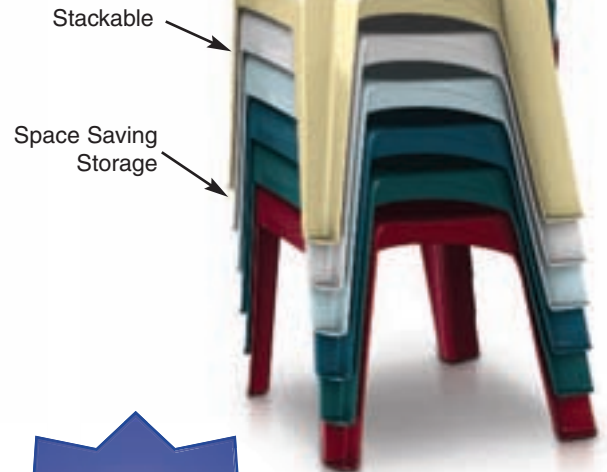
(800) 571-0770

THE CHAIR DESIGNED FOR CONTINUOUS, INTENSIVE USE IN EXTREME ENVIRONMENTS

The RazorBack Chair has an EXTREME load capacity. The RazorBack chair's "Muscle-Back" leg design and "Structural Span" provide MAXIMUM STRENGTH. In addition, the ergonomic low back design is more resistant to chair leaning or rocking – which can cause stress and failure in other chairs used in similar use environments.



10 YEAR WARRANTY



**BUDGET PRICES
EXTREME
PERFORMANCE**

FEATURES:

- Durable, one piece, injection molded design for increased strength. Constructed with high impact "no break" polypropylene. No steel or wood components
- **Muscle-Back** Legs include bolt down option
- Manufactured to ISO Quality Standards in the USA
- Flame retardant (passes Cal 133)
- 1500 lb. static load
- Passes ASTM F1561-03
- Test reports available upon request

Item	Color
86484BK	Black
86484B	Buff
86484FG	Fog Gray
86484T	Teal
86484SB	Slate Blue
86484P	Plum
86484BG	Blue Gray

Custom colors available upon request.
All dimensions and weights are nominal.
Specifications subject to change without notice.

The RazorBack Chair is an ideal seating solution for: Correctional Facilities, Institutions and all intense use environments.



100% AMERICAN MADE
BY: *American Shamrock*

Warranty valid on manufacturing defects only.

THE TOUGHEST, CORRECTIONAL SPECIFICSM SECTIONAL LOUNGE CHAIR SYSTEM

SABRE
Sectional Lounge Chair System

The Sabre Chair is a sectional lounge chair system
that is ideal for continuous,
intensive use in extreme environments!

The Sabre Chair has an EXTREME load capacity and designed to stand alone or be ganged together.
The ergonomic design provides maximum comfort using rotational molding technology.



THE SABRE CHAIR FEATURES . . .

- A 10 Year Warranty*
- Durable, one piece, rotationally molded design for increased strength. Constructed of high impact "no break" UV stabilized polyethylene. No steel or wood components.
- Can be used as stand alone or be ganged together.
- Can be bolted together, in place, as well as to the floor via concealed pilot holes.
- Can be easily filled with sand through ballast door on site to weigh down. Secures with tamperproof screws.
- Manufactured to ISO Quality Standards in the USA.
- Chemically resistant to all stains.
- Easy to clean and maintain.
- Flame Retardant (passes Cal 133). **
- 1500 lb. static load. **

*Warranty valid on manufacturing defects only.

**Test reports available upon request.



10 YEAR WARRANTY

Available in



Black / Gray / Slate Blue / Brown / Green

Custom colors available upon request.

Call Cortech for details.

**BUDGET PRICES
EXTREME
PERFORMANCE**



GSA Contract #: GS-27F-0011V*



100% AMERICAN MADE
BY: *American Shamrock*

The Sabre Chair and the manufacturing process to produce them has multiple design and utility patents pending. Warranty valid on manufacturing defects only. *Product Pending.

Our Correctional SpecificSM products contribute to a safe and humane correctional environment.
For Full Specifications Call Toll Free 800-571-0770 / Fax: 630-455-0813 / or Visit www.cortechusa.com

THE TOUGHEST, STACKABLE CORRECTIONAL SPECIFICSM INMATE BUNK

The EZ Bunk is designed and manufactured for frequent and intense temporary sleep surface use. Durable, space saving, clean, humane, ergonomic, cost effective, flame retardant, functional and aesthetically pleasing.

EZBUNK[®]

EZ To Clean • EZ To Stack • EZ To Store • EZ To Use

THE EZ BUNK FEATURES . . .

- **Space Saving**—Stack 21 bunks in 6.5 vertical feet
- Easily fits under most wall mounted bunks
- **Clean**—with optional factory drilled drain holes and smooth surface for easy cleaning and maintenance
- Integral full length molded handles on side and ends
- Functional use of both primary and secondary sides
- Internally molded structural cones for comfort and durability
- Manufactured to ISO Quality Standards in the USA

Fabrication: Rotationally molded 1 piece design for maximum durability.

Material: High density polyethylene with structural & flame retardant additives. Flame retardant (passes CAL TB133). Call Cortech for test results.

Mattresses Sold Separately



10 YEAR WARRANTY



**BUDGET PRICES
EXTREME
PERFORMANCE**



Item #	Color
7501	EZBunk, Gray, Stackable
7502	EZBunk, Blue, Stackable

All dimensions and weights are nominal.
Specifications subject to change without notice.

NEW ON
GSA Advantage![®]
www.gsaadvantage.gov
GSA Contract #: GS-27F-0011V

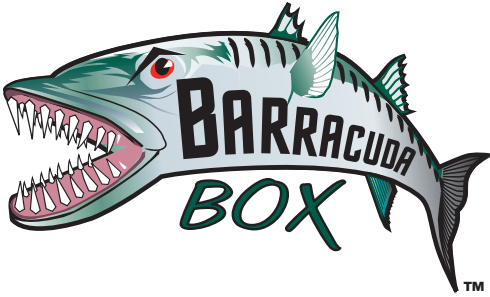


100% AMERICAN MADE
BY: *American Shamrock*

The EZBunk and the manufacturing process to produce them has multiple design and utility patents pending. Warranty valid on manufacturing defects only.

THE TOUGHEST INMATE PROPERTY STORAGE BOX

The Barracuda Box, The Toughest Inmate Property Storage Box, is specifically designed to exceed all requirements of an inmate property storage box. The Barracuda Box is stronger, lighter and more functional than other inmate property storage boxes.



The Barracuda Box Features:

- **"Stack and Nest" Design** - Stack property boxes with or without a lid without crushing the contents of the Barracuda Box. "Nest" property boxes inside one another by simply turning the empty box 180 degrees. Save on freight and save storage space
- Each Barracuda Box is **individually numbered** for effective inmate ID and property control
- Box capacity 1.5 (Regular) and 2.0 cu. ft. (Large)
- **Radius design** (rounded edges and corners) for **maximum impact dispersion and resistance**
- Vertical radiused structural columns for **maximum strength and impact resistance**
- Constructed with high impact "no break" polypropylene
- Flame Retardant (Passes CAL133)
Call Cortech for test results
- **Locking hasp** on both sides of the box
- Manufactured to ISO Quality Standards in the USA



**BUDGET PRICES
EXTREME
PERFORMANCE**

10 YEAR WARRANTY

The Barracuda Box and Lid are available in custom colors and your facility's name can also be molded into the Barracuda Box & Lid! Contact Cortech for Details.

Item	Color
3825P	Barracuda Box, Standard
7268P	Barracuda Box, Large
9689P	Barracuda Box, Universal Lid

All dimensions and weights are nominal.
Specifications subject to change without notice.



The Barracuda Box is
also manufactured
in a GREEN version.



100% AMERICAN MADE
BY: *American Shamrock*

The Barracuda Box and the manufacturing process to produce them has multiple design and utility patents pending. Warranty valid on manufacturing defects only.

*Our Correctional Specificsm products contribute to a safe and humane correctional environment.
For Full Specifications Call Toll Free 800-571-0770 / Fax: 630-455-0813 / or Visit www.cortechusa.com*

CORRECTIONAL SPECIFICSM MIRROR

VenturaMirror

The Ventura Mirror is designed and manufactured for applications where abuse or environmental conditions result in broken or unsightly mirror conditions.

**BUDGET PRICES
EXTREME
PERFORMANCE**

THE VENTURA MIRROR IS. . .

- Made from 100% virgin acrylic
- Easy to install
- Highly resistant to breakage

THE VENTURA MIRROR FEATURES. . .

- The highest quality mirrored surface
- One piece design with integral frame
- .236" nominal thickness
- Tamperproof fasteners. 6 torx head screws with center pin reject (Included)
- Recessed mounting holes
- Ships with abrasion / scratch resistant backing material to protect mirror surface
- Manufactured to ISO Quality Standards in the USA

APPLICATIONS:

- Correctional Institutions
- Schools / Universities
- Park & Recreational Facilities
- Industrial & Public Washrooms
- High Traffic areas where **breakage, tampering and potential abuse is prevalent**

Item	Size
VM 1115	11" x 15"
VM 1520	15" x 20"
VM 1824	18" x 24"

Dimensions and weights are nominal.
Specifications subject to change without notice.
Warranty valid on manufacturing defects only.



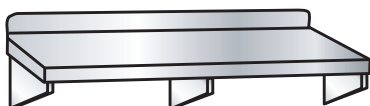
2 YEAR WARRANTY



100% AMERICAN MADE
BY: *American Shamrock*

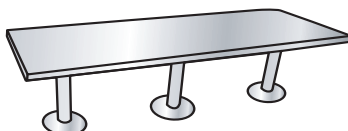
CORRECTIONAL SPECIFICSM STEEL FURNISHINGS

WALL MOUNTED BENCH



Our Wall Mounted Bench is constructed of a 12" wide 10 gauge steel top with flanges on all four sides. We primer finish all mild steel. Options include mild steel or stainless steel seat top, available powder coat finish.

FLOOR MOUNTED BENCH



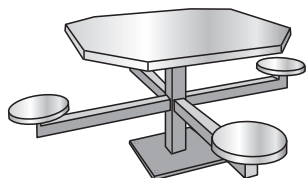
Our Floor Mounted Bench is constructed of 10 gauge steel top with flanges on all four sides. We primer finish all mild steel. Options include mild steel or stainless steel seat top, available powder coat finish.

WALL MOUNTED DESK



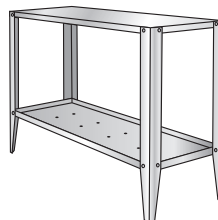
Our Wall Mounted Desk is fabricated from one piece of 10 gauge steel with sides flanged and edges ground smooth. We primer finish all mild steel. Options include mild steel or stainless steel seat top, available powder coat finish.

CORRECTIONAL SPECIFICSM STEEL PEDESTAL TABLE



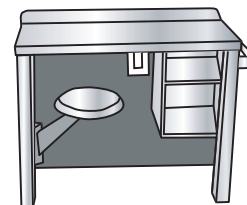
Fully welded, heavy duty pedestal style table features built-in, fixed seating. Available in powder coat or primed and available table tops are: Octagon (shown), Square, Rectangle, Round and Wall Mount.

FLOOR MOUNTED STEEL BUNK



Fully welded, heavy duty steel bunk. Available in Single or Double, Floor or Wall Mount. Powder coat or primed. Optional slide rails for the Barracuda Property Box.

FLOOR MOUNTED DESK



Floor Mounted Desk incorporates 10 gauge steel top. 12" diameter seat supported by an arm that swivels out of the way when needed. We primer finish all mild steel. Options include mild steel or stainless steel seat top, available powder coat finish.

CALL CORTECH FOR OUR COMPLETE LINE OF STEEL FURNISHINGS. ASK ABOUT OUR CUSTOM DESIGN CAPABILITIES: 800/571-0770

MEAL DELIVERY SYSTEMS, DRYING RACKS, AND STRAPS

**BUDGET PRICES
EXTREME
PERFORMANCE**

The Chuckwagon®

**The Chuckwagon by CORTECH®
will truly revolutionize your
meal delivery!**

Insulated Food Tray Delivery System



The Chuckwagon is an innovative, insulated, meal tray delivery cart. This cart is manufactured to the highest standards of expected abuse in a correctional environment.

The Chuckwagon, insulated food tray delivery cart, is a true one-piece molded delivery cart with no seams, no welded walls, no adhesives and no mechanically attached walls. The walls of the cart are filled with high grade insulation for maximum thermal retention. When used with either Rock Food Tray or The X-Tray, the hot stays hot and the cold stays cold!

The Chuckwagon is specially formulated with high impact polyethylene for maximum strength and impact resistance. It is chemically resistant to blood, vinegar, chlorine and other hazardous fluids.

The two insulated sliding doors, which are easily removed for cleaning can be locked closed. (Locking hasp optional)

10 YEAR WARRANTY

- 1 Molded handles on all four sides for easy maneuvering
- 2 Optional tamperproof locking door latch system
- 3 Designed with (4) drain holes for easy cleaning
- 4 Ribbed top surface holds more trays, beverage servers, wash racks or other items
- 5 Highest quality non-marring kingpin-less casters with quick change out design
- 6 Holds 102 X-Tray® or 132 Rock® Trays! Sold separately from Cortech
- 7 Built-in wall bumpers

Manufactured to
ISO Quality Standards in the USA.



100% AMERICAN MADE



Item #	Dimension	Capacity
C-1717	31"W x 61"H x 56" L	132 Rock Trays / 102 X-Trays

All dimensions and weights are nominal.
Specifications subject to change without notice.

The CHUCKWAGON design and the manufacturing process used to produce the CHUCKWAGON is patent pending. Warranty valid on manufacturing defects only.

*Our Correctional Specific™ products contribute to a safe and humane correctional environment.
For Full Specifications Call Toll Free 800-571-0770 / Fax: 630-455-0813 / or Visit www.cortechusa.com*

FOOD SERVICE

THE MOST VERSATILE, NON-INSULATED FOOD DELIVERY CART AVAILABLE

Eliminate Straps • No Metal • Eliminate Maintenance Cost

THE
TRAY[®]
MASTER
PATENT PENDING

The Tray-Master is the most versatile, non-insulated, food delivery cart available. This cart is manufactured to the highest standards of expected abuse in extreme, intense use applications. The Tray-Master can quickly and neatly stack The Rock, The X-Tray and *can be reconfigured to accommodate other tray sizes* – contact Cortech at 800-571-0770 for more information.

THE TRAY-MASTER FEATURES:

- ① Accommodates any tray up to 9 1/2" x 14 1/2"
 - ② Raised top edge surface safely holds more trays, beverage servers and wash racks
 - ③ Handle slots for easy navigation
 - ④ 90° Dual-Lock doors (lock open/lock closed) for easy and efficient insertion and removal of trays and increased safety in transporting
 - ⑤ Highest quality non-marring kingpin-less casters with quick change out design
- Made from 100% virgin high density polyethylene (HDPE)
 - Structural design for maximum strength
 - Super smooth finish reduces marring of wall surfaces
 - Easy to clean & maintain with soap and water solution
 - Manufactured to ISO Quality Standards in the USA

**BUDGET PRICES
EXTREME
PERFORMANCE**



10 YEAR WARRANTY

Item #	Dimension	Capacity
C-1719	31.5"W x 53.75"H x 67"L	156 Rock Trays / 108 X-Trays

All dimensions and weights are nominal.
Specifications subject to change without notice.
Warranty valid on manufacturing defects only.



100% AMERICAN MADE
BY: *American Shamrock*



GSA Contract #: GS-07F-0374V*



DOORS LOCKED CLOSED FOR SECURE TRANSPORT.

The Tray-Master design and the manufacturing process used to produce the Tray-Master is patent pending. *Product Pending.

X-TRAY® INSULATED FOOD TRAYS

The X-Tray is made from insulated material that does not absorb water. One Piece, no seams, no internal insulation. Ideal for continuous, intensive use in extreme environments!



THE X-TRAY is:

X-TRAY®-Extreme Insulated Tray, Cortech's True One-Piece, seamless design has added features. Our X-TRAY has 5 compartments and 2 condiment compartments for bulk use (cost savings realized). The X-TRAY has tongue and groove sealed compartments for superior temperature control (process patented). The raised utensil slot adds delivery convenience. The X-TRAY utilizes 2" top to bottom of the feeding surface; and the most extreme feature - the tray weighs only 1.75 lbs. The durability of the X-TRAY is that of our Rock Tray, plus these extra features. For your X-Treme Tray needs, the X-TRAY is your solution.

X-TRAY® is the **LIGHTEST** insulated food tray in the industry at just 1.75 lbs.

Raised utensil slot for delivery convenience.

X-TRAY® is manufactured with **FDA Approved** material

Condiment cavities for bulk instead of individual portion packets. *Cost Savings Realized*

Highest Breakage Resistance Available.
1/4" minimum wall thickness

Patented tongue and groove design seals entire perimeter AND all individual compartments for the tightest seal available. Non-discriminatory in stacking!

**HOT STAYS HOT.
Gold Stays Gold.**

Overall Dimension (14-1/4" x 9-1/2" x 2-1/4")
2" total food depth from top to bottom.

X-TRAY's patented **one piece** design features – easy to eat from, easy to clean and easy to maintain correctional food tray

**BUDGET PRICES
EXTREME
PERFORMANCE**

**HOT STAYS HOT.
Gold Stays Gold.**

Manufactured to
ISO Quality Standards in the USA.



100% AMERICAN MADE

NEW ON
GSA Advantage!
www.gsaadvantage.gov
GSA Contract #: GS-07F-0374V

10 YEAR WARRANTY

Item #	Description	Case Qty.
3000-C	Brown X-TRAY®	10
3000-DG	Dark Gray X-TRAY®	10
3000-TC	Terra Cotta X-TRAY®	10
3000-O	Orange X-TRAY®	10
3000-CL	Brown X-TRAY® Lid	10
3000-DGL	Dark Gray X-TRAY® Lid	10
3000-TCL	Terra Cotta X-TRAY® Lid	10
3000-OL	Orange X-TRAY® Lid	10

Dimensions and weights are nominal.
Specifications subject to change without notice.
Warranty valid on manufacturing defects only.

The XTray is patented and its design is copyrighted. The manufacturing process used to produce The XTray is patented.

*Our Correctional Specificsm products contribute to a safe and humane correctional environment.
For Full Specifications Call Toll Free 800-571-0770 / Fax: 630-455-0813 / or Visit www.cortechusa.com*

FOOD SERVICE

THE ROCK® INSULATED FOOD TRAYS

The Rock is made from insulated material that does not absorb water. One Piece, no seams, no internal insulation.
Ideal for continuous, intensive use in extreme environments!



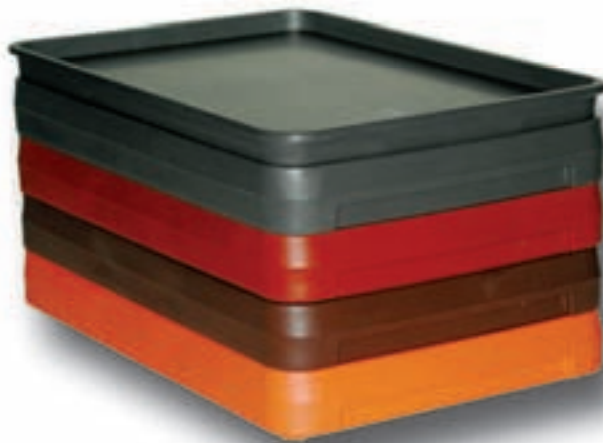
HOT STAYS HOT. Cold Stays Cold.

FOOD SERVICE



THE ROCK® - Cortech's TRUE One-Piece, seamless design insulated food tray, has been tested in correctional facilities with over 350 different menus. The 5 compartments have proven that they can handle any correctional meal, plus with the 2 additional condiment compartments, use of bulk condiment portions will yield a savings that can pay for the tray itself.

10 YEAR WARRANTY



THE ROCK is:

- Made from an insulated material, THE ROCK® has no internal insulation, which means it will not absorb water
- The radius corners and softly beveled bottom make it easier to eat from and easier to clean
- THE ROCK® is manufactured with an FDA Approved Material and built to ISO Quality Standards
- THE ROCK® carries a 10 Year Warranty Against Breakage, Cracking or Leaking
- Manufactured to ISO Quality Standards in the USA

Item #	Description	Case Qty.
2000-C	Brown Rock	10
2000-DG	Dark Gray Rock	10
2000-TC	Terra Cotta Rock (Burnt Orange)	10
2000-O	Orange Rock	10
2000-CL	Brown Lid	10
2000-DGL	Dark Gray Lid	10
2000-TCL	Terra Cotta Lid	10
2000-OL	Orange Lid	10

Dimensions and weights are nominal.
Specifications subject to change without notice.
Warranty valid on manufacturing defects only.

**BUDGET PRICES
EXTREME
PERFORMANCE**

NEW ON
GSA Advantage!
www.gsaadvantage.gov
GSA Contract #: GS-07F-0374V



100% AMERICAN MADE

The ROCK is patented and its design is copyrighted. The manufacturing process used to produce the ROCK is patented.



THE Kerry Cart™

FLATBED DOLLY CART



100% AMERICAN MADE
BY: *American Shamrock*

Item #	Dimension
C-1720	31.5" W x 67" L

10 YEAR WARRANTY

ALL WELDED HANDLE CONSTRUCTION:

- Easy assembly with tamper proof hardware
- Handle Bar for easy navigation
- Highest quality non-marring kingpin-less casters with quick change out design
- Easy to clean & maintain with soap and water solution
- Made from 100% virgin high density polyethylene (HDPE)
- Structural design for maximum strength
- Super smooth finish reduces marring of wall surfaces
- Manufactured to ISO Quality Standards in the USA

*Product Pending.



FOOD TRAY DRYING RACK

- Frame Constructed of 1 1/2" x 1 3/4" Aluminum Tubing
- All Guides .09 Thick and Radius for Safety
- 5" x 2" Platform Casters
- Lifetime Warranty Against Rust & Corrosion
- Tray slot is 2.65" wide
- **Ships Knocked Down**



Item #	Dimension	Capacity
96087	28"D x 74.5"L x 59"W	180 Trays
96090	28"D x 50.5"L x 59"W	120 Trays

FOOD TRAY STRAPS

Food Tray Strap: Side Release Buckle



Item #	Description
POLYSRB-5	5' polypropylene strap with plastic side release nylon buckle strap closure

Note: 10', 12', and 15' straps available in nylon or polypropylene material and either closures.

KITCHEN DISPOSABLES



DAP1.25-28X46

Disposable Poly Aprons



DBWH-21-1

White Bouffant Cap 21"



DBRD-1000

Beard Covers



GVDR-(SIZE)

Vinyl Glove Powdered XL



GDPE-(SIZE)

Poly Gloves - L



GRFY-(SIZE)

Yellow Flocked Lined Glove

**BUDGET PRICES
EXTREME
PERFORMANCE**

Item #	Description	Case Qty.
GVDR-(SIZE)	Vinyl Glove S M L XL	1,000
GDPE-(SIZE)	Poly Glove S M L XL	10,000
GRFY-(SIZE)	Flock lined Glove S M L XL	120 pairs
DAP1.25-28X46	Poly Apron 24"x 42"	1,000
DBWH-21-1	Bouffant Cap	1,000
DBRD-1000	Beard Covers	1,000
1CP3660NH	Clear 36" x 60" Can Liner	200
1CP3660XHN	X-Heavy Clear 36" x 60" Can Liner	200
BPD3-XL-5	Shoe Covers	500

**Call 1-800-571-0770
for Special Pricing**



THE TOUGHEST, MOST INNOVATIVE, CORRECTIONAL SPECIFICSM TRASH RECEPTACLES!

The Cobra Can is virtually UNBREAKABLE and is the toughest, most innovative, Correctional SpecificSM trash receptacle. Ideal for continuous, intensive use in extreme environments!

The COBRA CANTM



9 Sizes: From 20 Gallon to 55 Gallon



The Cobra Can Features ...

- 360° molded in continuous handles surround the entire can perimeter and underside for easier lifting
- Molded in floor glides reduce floor scratching when dragged across the floor



The Cobra Can is . . .

- Virtually Unbreakable
- Available in Flame Retardant, Food Grade - FDA material and General Use. (Passes Cal 133, call for test results)
- .22" Nominal Wall Thickness
- Lid included
- Manufactured to ISO Quality Standards in the USA

**BUDGET PRICES
EXTREME
PERFORMANCE**

10 YEAR WARRANTY



The Cobra Can is ideal for: Correctional Facilities, Institutions and all intense use facility.



100% AMERICAN MADE
BY: *American Shamrock*

Cobra Can - Food Grade / General Use		
	Size (gallons)	Color
20720G	20	Green
22720G	22	Green
25720G	25	Green
30720G	30	Green
35720G	35	Green
40720G	40	Green
45720G	45	Green
50720G	50	Green
55720G	55	Green
20620B	20	Blue
22620B	22	Blue
25620B	25	Blue
30620B	30	Blue
35620B	35	Blue
40620B	40	Blue
45620B	45	Blue
50620B	50	Blue
55620B	55	Blue
20584R	20	Red
22584R	22	Red
25584R	25	Red
30584R	30	Red
35584R	35	Red
40584R	40	Red
45584R	45	Red
50584R	50	Red
55584R	55	Red
202W	20	White
222W	22	White
252W	25	White
302W	30	White
352W	35	White
402W	40	White
452W	45	White
502W	50	White
552W	55	White
20451Y	20	Yellow
22451Y	22	Yellow
25451Y	25	Yellow
30451Y	30	Yellow
35451Y	35	Yellow
40451Y	40	Yellow
45451Y	45	Yellow
50451Y	50	Yellow
55451Y	55	Yellow
20116B	20	Black
22116B	22	Black
25116B	25	Black
30116B	30	Black
35116B	35	Black
40116B	40	Black
45116B	45	Black
50116B	50	Black
55116B	55	Black

Cobra Can - Flame Retardant**		
	Size (gallons)	Color
20200FR	20	Gray
22200FR	22	Gray
25200FR	25	Gray
30200FR	30	Gray
35200FR	35	Gray
40200FR	40	Gray
45200FR	45	Gray
50200FR	50	Gray
55200FR	55	Gray

** FR also available in Green and Blue

The Cobra Can and the Manufacturing process to produce them has multiple design and utility patents pending. Warranty valid on manufacturing defects only.

THE MOST DURABLE AND VERSATILE ALL PURPOSE DELIVERY CART

The Kangaroo Cart is an innovative cart that delivers unmatched durability, versatility and maneuverability.
Ideal for continuous, intensive use in extreme environments!

THE **KANGAROO**
CART™



10 YEAR WARRANTY



**BUDGET PRICES
EXTREME
PERFORMANCE**



Perfect For:

- Laundry Collection & Delivery
- Garbage Collection
- Recycling Bin
- General Delivery Cart & Material Handling
- Food Processing
- Beverage Service Container
(Manufactured with insulated material)
- Janitor Cart
- Indoor or Outdoor Use

Technical Specifications

- Manufactured to ISO quality standards.
- Injection molded with **NO BREAK** polyethylene

The Kangaroo Cart Features:

- Heavy Duty - .200 Nominal Wall Thickness
- 1,000 lbs. Load Rating/15 Bushel Capacity
- Heavy Duty Casters Secured with Stainless Steel, Tamper-Proof Hardware
- Push – Pull Handles On Both Sides that Accommodate Utility Use
- Drain Plug for Easy Cleaning
- Manufactured Three Ways: Flame Retardant (Passes Cal 133), General Use and Recycled Material. Call for FR test results
- No Wood or Metal Components
- Manufactured to ISO Quality Standards in the USA

Item #	Color	Material
CC200	Gray	Flame Retardant
CC783	Green	Flame Retardant
CC680	Blue	Flame Retardant
CC280	Gray	General Use
CC720	Green	General Use
CC620	Blue	General Use
CC2	White	General Use
CC116	Repro Black*	Recycled

*Made from 100% Recycled Material
Custom Colors Available.

All dimensions and weights are nominal.
Specifications subject to change without notice.

NEW ON
GSA Advantage!
www.gsaadvantage.gov
GSA Contract #: GS-07F-0374V

FACILITY MAINTENANCE

Warranty valid on manufacturing defects only.

*Our Correctional Specificsm products contribute to a safe and humane correctional environment.
For Full Specifications Call Toll Free 800-571-0770 / Fax: 630-455-0813 / or Visit www.cortechusa.com*

SECURITY WIRING DEVICE WALL PLATES AND COVERS

Security Wiring Device Wall Plates and Covers Ideal for continuous, intensive use in extreme environments!



The Cortech Tiger Series Security Wall Plates represent the finest in high abuse wiring device cover plates. All plates are designed and manufactured to eliminate costly replacement of essential electrical devices. The TP series is designed and built to hold up in the most extreme institutional and industrial environments. Injection molded in high strength Polycarbonate/Nylon Blend, the TP series will not rust or break. Our molding system eliminates the need for painting. All plates are oversized to accommodate mounting directly into any wall type. The oversized design allows for j-box opening and mounting surface imperfections.

**BUDGET PRICES
EXTREME
PERFORMANCE**



FEATURES:

- High Impact Resistance/Virtually Unbreakable
 - Architectural, Smudge Resistant White
 - 100% Rust Proof
 - Manufactured to ISO Quality Standard in the USA
 - Protective Side Impact Lip
 - Tamperproof Fastening System
 - Smooth Radius Corners
 - Fast, Easy Installation
 - Patented Product & Process
- *Wiring devices not included

10 YEAR WARRANTY

SPECIFICATIONS:

Cover plate: Tamperproof one-piece injection molded high strength Polycarbonate/Nylon Blend with Radiused Corners and Textured Finish. 3/16" plate wall thickness. *Wiring devices not included

Oversized plate dimensions: Single gang 3 1/2" x 5 1/2" / Double gang 5 1/2" x 5 1/2"

Four zinc plated tamperproof screws included (torx head with center pin reject).
*Devices held to plate (2) 8/32 x 1/2" for single or (4) for double (Torx head with center pin reject). See mounting instructions and order guide.

Item	Description
TPSS	Single Switch
TPDR	Duplex Receptacle
TPBB	Blank
TPGF	Ground Fault Interrupter Receptacle
TPDBB	Double Blank
TPDD	Double Duplex Receptacle
TPDGF	Double Ground Fault Interrupter Receptacles
TPDS	Duplex Switch



100% AMERICAN MADE
BY: *American Shamrock*

Dimensions and weights are nominal.
Specifications subject to change without notice.
Tiger Plates come standard in white. Custom colors available.
Warranty valid on manufacturing defects only.

Tiger Plates are patented and their design is copyrighted. The manufacturing process used to produce Tiger Plates is patented.

CORTECH CORNER GUARDS

Cortech's Corner Guards protect your facilities corners from chips, dings and damage.
Ideal for continuous, intensive use in extreme environments.



100% AMERICAN MADE
BY: *American Shamrock*



Corner Guards . . .

- Protect Drywall, Plaster and Concrete Wall corners
- Flame Retardant
- Heavy Duty—Corner Thickness of .09"
- Manufactured in the USA from 100% Virgin Polypropylene
- Weather Resistant for Interior or Exterior Use
- Easy to Clean with Soap and Water Solution
- Bullnose corner guards available for rounded or obtuse angles
- Perfect for Use in Kitchens, High Traffic Hallways, Storage Spaces, Parking Garages and Anywhere Carts, Forklifts or Dolly's are Used

**BUDGET PRICES
EXTREME
PERFORMANCE**

Corner Guards Feature:

- Aesthetic Design
- Smooth Finish
- Beveled Edge for Finished Look
- Easy Installation — Mechanically Fastened with Tamperproof Screws or with Factory Installed Permanent Adhesive Tape

**Cortech's Corner Guards come in 8 Standard Colors
and in 1", 2", 3" and 4" Widths and 2 1/2" Bullnose**

**Visit www.cortechusa.com for
full ordering or call 800-571-0770.**

Item	Color	Size	Length
CGB	Black	1", 2", 3" or 4"	4 feet
CGC	Clear*	1", 2", 3" or 4"	4 feet
CGW	White	1", 2", 3" or 4"	4 feet
CGY	Yellow	1", 2", 3" or 4"	4 feet
CGA	Almond	1", 2", 3" or 4"	4 feet
CGZ	Bronze	1", 2", 3" or 4"	4 feet
CGG	Gray	1", 2", 3" or 4"	4 feet
CGS	Silver	1", 2", 3" or 4"	4 feet
CGBN	Bullnose	2 1/2"	4 feet

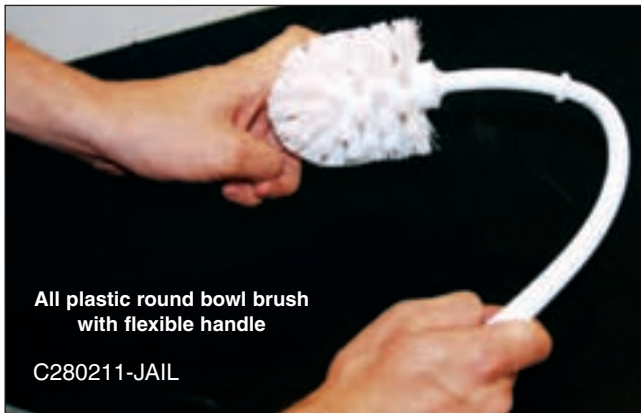
Available in Adhesive or Fastener Mount. *Clear is only available in Fastener Mount.
Clear Corner Guards and Corner Guards with adhesive mounting strip are not flame retardant.
All dimensions and weights are nominal. Specifications subject to change without notice.
Warranty valid on manufacturing defects only.

10 YEAR WARRANTY

*Our Correctional Specificsm products contribute to a safe and humane correctional environment.
For Full Specifications Call Toll Free 800-571-0770 / Fax: 630-455-0813 / or Visit www.cortechusa.com*

METAL FREE JANITORIAL PRODUCTS

Help keep your facility free from weapon fabrication with our **ALL plastic, no metal** correctional specific janitorial product line. All products are made specifically with the safety of correctional environments in mind.



All plastic round bowl brush with flexible handle

C280211-JAIL



CB-5000



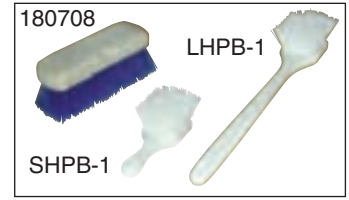
The **BENGAL Bucket** is designed for correctional environments with no metal parts.



100% AMERICAN MADE
BY: *American Stanrock*



24" Pushbroom Head



All plastic shower brush / handle pot brushes / scrub brush



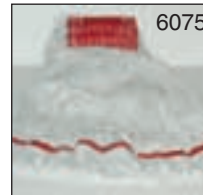
All Plastic Dustpan



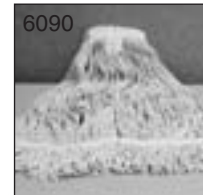
All Plastic Angle Broom



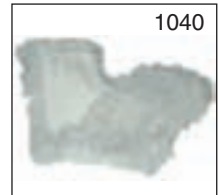
Corn broom; no metal or wire parts



Cotton Mop Head, 5" Band



Finish Mop Head



36" Dust Mop Head Use with 1049-JAIL

Item Number	Description	Case Qty
CB-5000	Bengal Bucket	1
D100	Stainless Steel Scrubbers, Premium Grade	72
D100/12	Stainless Steel Scrubbers, Premium Grade	12
510163	X Heavy Duty Hand Pads, 6 x 9, Green	60
CONE/40Z	4 ounce Cone Cups	5,000
2010-JAIL	Fiber Mop Handle with T Bar Head	12
2006F-JAIL	Fiber Mop Handle with Jaw Grip Head	12
2040-JAIL	Fiber Threaded Handle, 60"	12
2041-JAIL	Fiber Square Cut Handle	12
9899-JAIL	All Plastic Push Broom Head	12
2600-JAIL	All Plastic Angle Broom, Finber 48" Handle, Plastic Head	6
1049-JAIL	36" All Plastic Dust Mop Frame	6
1040	Dust Mop Cover/Refill, 36"	12
784722-JAIL	22" All Plastic Squeegee Head	6
3020-JAIL	Corn Broom, No Metal or Wire	6
180708	8" Plastic Shower Brush with Thread Receiver	12
SHPB1	Short Handle Pot Brush, All Plastic	6
LHPB1	Long Handle Pot Brush, All Plastic	6
1601000	7" Plastic Scrub Brush - Hand Held	12
C280211-JAIL	All Plastic Bowl Brush W/Flex Handle	12
7537	All Plastic Dust Pan	12
6075	Cotton Mop Head, 5" Band	12
6175	Cotton Mop Head, 1" Band	12
6090	Finish Mop Head	12
6060	Blue Cotton Mop Head, 5" Band	12
6063	Green Cotton Mop Head, 5" Band	12
6032	Yellow Cotton Mop Head, 5" Band	12
119	"Caution" Wet Floor Signs, Bi-lingual	6
125SP	"Wet Floor" Caution Cones, Bi-lingual	6
184GY	Janitor Cart	1
188YW	Yellow Vinyl Replacement Bags	6
922HLWHWH	Trigger Sprayers, 9 3/4", White	200
922HLRDWH	Trigger Sprayers, 9 3/4", Red	200
922HLBLWH	Trigger Sprayers, 9 3/4", Blue	200
1CP3660NH	Clear 36" x 60" Can Liner	200
1CP3660XHN	X-Heavy Clear 36" x 60" Can Liner	200



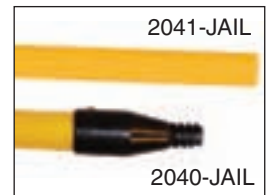
22" All Plastic Squeegee Head - Use with 2041-JAIL



36" All Plastic Dust Mop Frame - Use with 2041-JAIL



Fiber Mop Handles



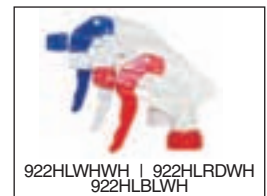
Threaded Fiber Handle / Square Cut Fiber Handle



Janitor Cart & Replacement Bag



"Caution" Wet Floor Signs, "Wet Floor" Caution Cones Bi-lingual



Trigger Sprayers, 9 3/4"

**All Items
Ship 1-7 Days
From Order Receipt.**

Call 1-800-571-0770 for Special Pricing

16 *Our Correctional Specificsm products contribute to a safe and humane correctional environment. For Full Specifications Call Toll Free 800-571-0770 / Fax: 630-455-0813 / or Visit www.cortechusa.com*

FLOOR MAINTENANCE MACHINES

TAMPERPROOF FLOOR POLISHERS AND BURNISHERS



Cast Aluminum Means Durability

Our hard working line of tamper resistant floor machines feature a high torque motor, precision - cast base and high polished aluminum base. Made in the USA.

Item #	Description
485449TP	20" Tamperproof Floor Polisher-Needs 505905
505905	20" Pad Driver For C200PX-TP
495464	20" Tamperproof Floor Burnisher w/Pad Driver
485494TP	17" Tamperproof Floor Polisher-Needs 505903
505903	17" Pad Driver for C170PX-TP
485446TP	20" Dual Speed Floor Polisher-Needs 505909
505909	20" Pad Driver for TP-PX205DS

Ships in 1-7 Days From Order Receipt.

Freight Pre-Paid on 12 or more Machines.

GRUNGE BUSTER - Tamper Proof Baseboard and Tile Cleaner



The Grunge Buster is Designed specifically for thorough cleaning of hard to reach areas typical of correctional environments such as commodes, showers, stairwells and base boards. *Pad Driver and Mal-Grit Brush come with unit.

Freight included on orders of 12 machines to one location.

Ships in 1-7 Days From Order Receipt.

Item #	Description
515460	Tamper Resistant Grunge Buster
973001	6 1/2" Brown Strip Pads/10 per case
973002	6 1/2" Red Scrub Pads/10 per case
973003	6 1/2" White Polish Pads/10 per case
510954	6 1/2" Nylon Soft Brush
510952	8" Polypropylene Non Abrasive Brush
513650	Splash Guard
510950	6 1/2" Mal-Grit Brush
515950	6" Pad Driver

FLOOR MACHINE PADS

Strip, polish, buff and scrub. Available in a variety of grades and sizes.

Polisher Pads

Item #	Description
400120	20" Black Strip Pads
401220	20" White Polish Pads
404420	20" Red Buff Pads
401420	20" Tan Buff Pads



Burnisher Pads

Item #	Description
401520	20" Ultra High Speed Pads
401720	20" Natural Fiber Ultra High Speed Pads
402020	20" Ultra High Speed Combo Pads

Sizes available from 7 3/4" - 31" in all grades. Please call for more variety of pads available.

Ships in 1-7 Days From Order Receipt.



Aura Vacuum

VACUUMS

Quality-Performance-Value. Our upright vacuums are the choice of many because of the enhanced industry-grade features.

Item #	Description
655402	Aura 28" Vacuum

Ships in 1-7 Days From Order Receipt.



Air Blower

AIR BLOWER

Our portable air blower handles 3 speeds at 850, 900 & 1100 rpm's.

Item #	Description
225445	Three Speed Air Blower
225090	Transport Kit

Ships in 1-7 Days From Order Receipt.

Call 800-571-0770 for complete line of floor machine products and specifications.

*Our Correctional Specificsm products contribute to a safe and humane correctional environment.
For Full Specifications Call Toll Free 800-571-0770 / Fax: 630-455-0813 / or Visit www.cortechusa.com*

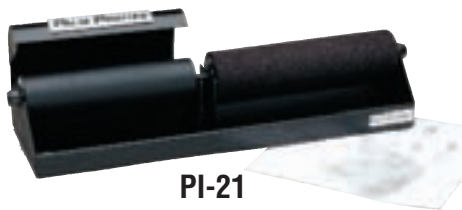
FINGERPRINTING PRODUCTS

Perfect Ink Fingerprint Equipment

All elements are attached and ready to use. Easily replaceable Perfect Ink Pad develops instant, permanent, non-smearing prints on all fingerprint cards. Several variations of the fingerprint station are available to suit your department needs.



PI-39K



PI-21



PI-39TL



PI-39T



PI-39



PI-39L

Item #	Description
PI-39	Portable Fingerprint Station w/ PI-30 and Card Holder
PI-39L	Portable Fingerprint Station w/Legs (PI-30 & LE-38)
PI-39K	Portable Fingerprint Station Kit
PI-39LK	Portable Fingerprint Station Kit with Legs
PI-39T	Fingerprint Station with 2 Card Holders
PI-30	Replacement Perfect Ink Pad for Portable Stations
PI-21	Perfect Ink Roller Palm Printer
PI-121	PI-21 Replacement Kit

Kits include: specified station, box of ReTabs, 50 pre-print cleaners, roller palm printer and a foam lined plastic briefcase with built-in card replacement area.

Perfect Ink



A no mess ink that is easily wiped away. The products produce permanent, black, high contrast prints that are AFIS approved. Our patented delivery system consistently applies an equal amount of solution to every finger, prevents evaporation of solution, prolongs the printing surface, and lowers the rejection rate. All Perfect Ink products are non-toxic.

Item #	Description
PI-30	Large Rectangular Perfect Ink Pad (3" x 4.5")/16,000 Prints/800 Full 10 Print Cards
PI-20	Large Round Perfect Ink Pad (2.5" diameter) / 4,800 Prints
PI-10	Small Round Perfect Ink Pads (1.5" diameter)/1,200 Prints – 6 Per Pack
PI-10-I	Small Round Perfect Ink Pad (1.75" diameter)/1,200 Prints – Individual
PI-5	Small Rectangular Perfect Ink Pad (1.75" x 2.25")/500 Prints - 6 per pack
PI-5-I	Small Rectangular Perfect Ink Pad (1.75" x 2.25")/500 Prints - Individual

CALL 800-571-0770 OR VISIT WWW.CORTECHUSA.COM FOR OUR COMPLETE LINE FINGERPRINTING PRODUCTS.

SAFETY AND RESTRAINTS

8111 Lightweight Steloy Chain Style Handcuff



8111

- Top quality, heavy duty, steel and Steloy construction making the handcuffs 40% lighter and 17% larger than standard cuffs
- 18 tooth, 3-retaining-bar system for uncompromising security
- Positive swing-through action built-in back loading for fast cuffing

8132 Rigid Handcuff



8132

- Top quality, heavy duty, steel construction
- Added power and control that can only come from a solid bar rigid design
- 18 tooth, 3 retaining-bar system for uncompromising security
- Positive swing-through action built-in back loading for fast cuffing
- Rigid Handcuff Black 8132-1-2
- Rigid Handcuff Nickel 8132-1-31

8220 Double cuff



8220

- Double cuff features gives the officer greater control and the ability to stabilize the subject after one cuff is in place
- Control both wrists/forearms and ankles
- Standard length is 34" (86.36cm)
- 1/2 " (1.27cm) wide beveled edges to reduce potential for subject injury
- Tensile strength for more than 400lbs (240kg)
- 10 Packs or Box of 100

Available in White, Black, Blue, OD Green, Orange, Pink, Purple, Yellow, Lime Green and Tan.

8310 Spit Net



8310

- The Spit Net affixes under the arms for additional security while transporting threatening subjects
- Protects against spitting and biting
- The mesh netting and bacteria-filtering fabric gives the subject full visibility and breathability while helping restrict the spread of biological contaminants
- 8310-0-2 The Spit Net
- 8310-0-2B The Spit Net, Pack of 100
- 8310-0-2C The Spit Net, Pack of 5

CALL 800-571-0770 OR VISIT WWW.CORTECHUSA.COM FOR OUR COMPLETE LINE OF SECURITY PRODUCTS.

• Finger Printing
Equipment
and Accessories

• Transport Hoods
• FlexCuffs
• Handcuffs

• Fraud Detection
• Evidence Bags
• X-Ray Parcel Scanners

*Our Correctional Specificsm products contribute to a safe and humane correctional environment.
For Full Specifications Call Toll Free 800-571-0770 / Fax: 630-455-0813 / or Visit www.cortechusa.com*



Our Correctional SpecificSM products contribute to a safe and humane correctional environment.

CORTECH[®]
USA

7530 Plaza Court • Willowbrook, IL 60527
(800) 571-0770 • (630) 455-0813 Fax

Cortech's Fed ID #: 36-3932100

June 2010
Corrections

Most Items Ship 1-7 Days From Order Receipt.

For more information on all Cortech products, visit our website at: www.cortechusa.com



BUDGET PRICES / EXTREME PERFORMANCE / BUY AMERICAN!

Available on



GSA Contract #: GS-27F-0011V

RazorBack Chair
EZ Bunk
Barracuda Box

GSA Contract #: GS-07F-0374V

The Chuckwagon
The Cobra Can
Kangaroo Cart

The Rock
X-Tray

Tray-Master &
The Kerry Cart
Products Pending

CORTECH[®]
USA

7530 Plaza Court
Willowbrook, IL 60527



**SAVE
MONEY!**

**CALL CORTECH FOR OUR
CURRENT BUDGET SAVING
PROMOTIONS!**

800-571-0770

Cortech USA is not responsible for printing errors or omissions. Products and specifications subject to change without notice.